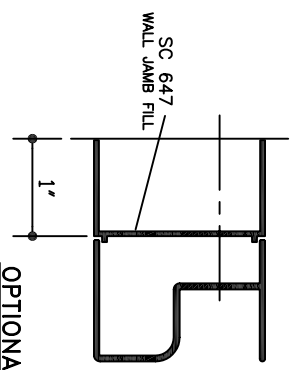
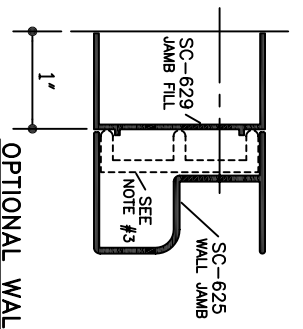


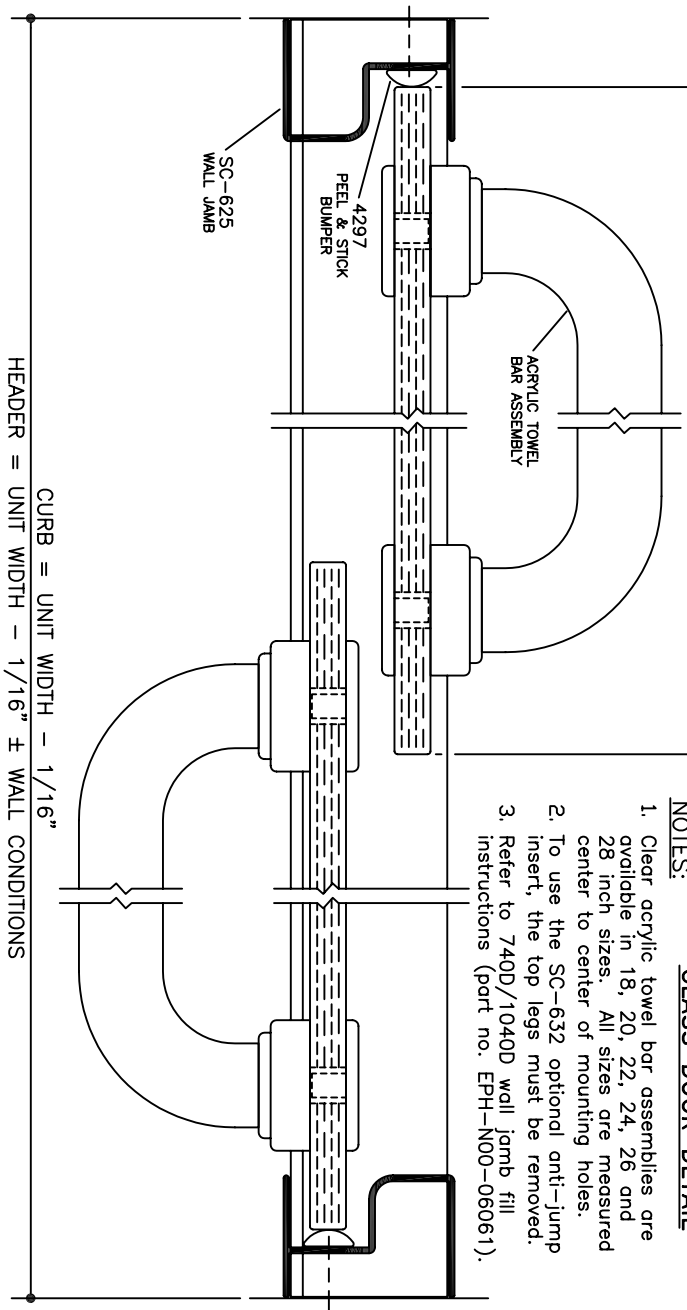
VERTICAL CROSS SECTION



OPTIONAL WALL JAMB FILL W/ T-LOCK

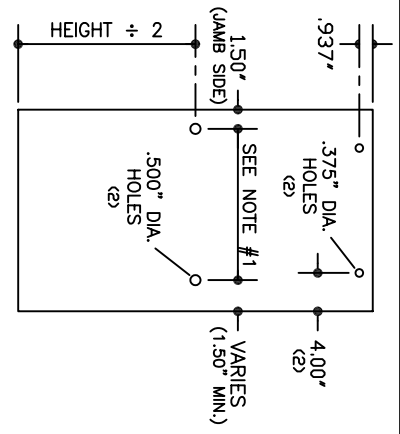
OPTIONAL WALL JAMB FILL

GLASS WIDTH = (UNIT WIDTH ÷ 2) + 1/4"



HORIZONTAL CROSS SECTION

NOTE: Glazing material for all KD units and Glazed units must conform to Ansi Z97.1 and CPSC Standard 16 CFC 1201 Category I and II.



GLASS DOOR DETAIL

- NOTES:
1. Clear acrylic towel bar assemblies are available in 18, 20, 22, 24, 26 and 28 inch sizes. All sizes are measured center to center of mounting holes.
 2. To use the SC-632 optional anti-jump insert, the top legs must be removed.
 3. Refer to 740D/1040D wall jamb fill instructions (part no. EPH-N00-06061).

1/2 SIZE DETAIL

SERIES

1040

FRAMELESS BATH ENCLOSURE

ALUMAX
BATH ENCLOSURES

a product of ALCOA
PO Box 40 - Magnolia, AR 71754-0040 - (870) 234-4260
www.alumaxbath.com

G03711188
DATE: 4-4-06