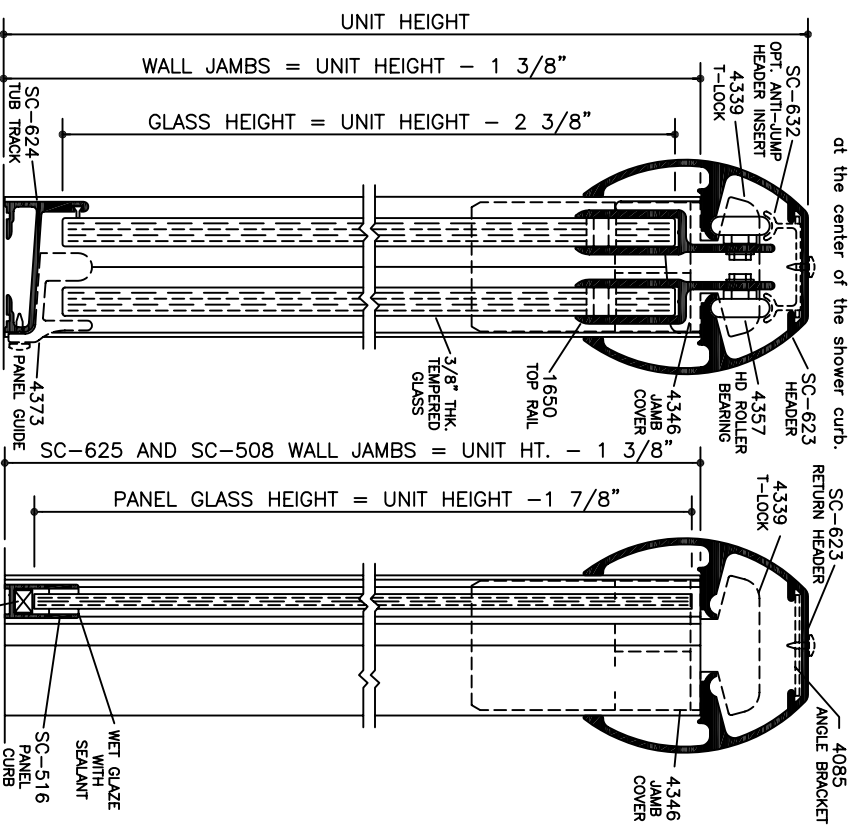
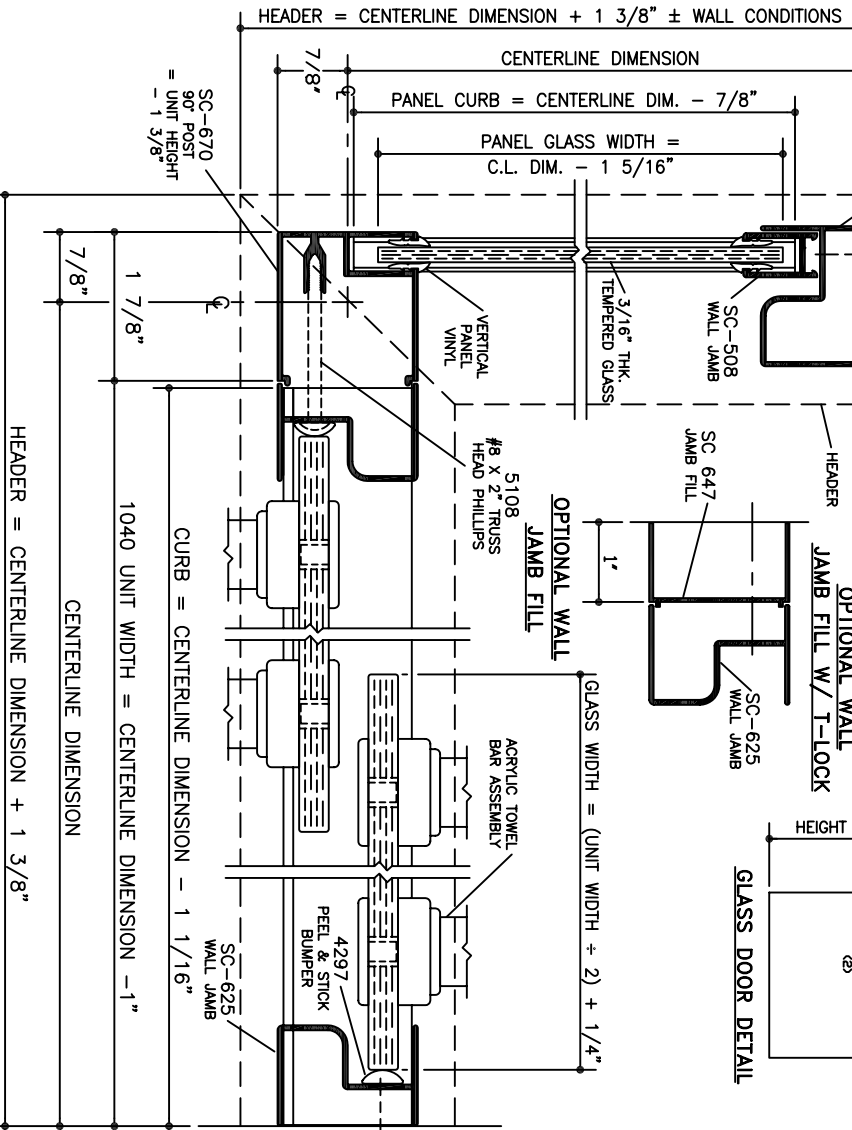


NOTES:

1. Clear acrylic towel bar assemblies are available in 18, 20, 22, 24, 26 and 28 inch sizes. All sizes are measured center to center of mounting holes.
2. To use the SC-632 optional anti-jump insert, the top legs must be removed.
3. Refer to 740D/1040D wall jamb fill instructions (part no. EPH-N00-06061).
4. Center line dimension refers to measurements taken of the center of the shower curb.



PANEL GLAZING VINYL	
GLASS THICKNESS	VERTICAL
1/4"	V-219
3/16"	V-226



1/2 SIZE DETAIL

VERTICAL CROSS SECTION

NOTE: Glazing material for all KD units and Glazed units must conform to Ansi Z97.1 and CPSC Standard 16 CFC 1201 Category I and II.

HORIZONTAL CROSS SECTION

G03711244
DATE: 3-4-06

SERIES

1042M

MITERED HEADER
FRAMELESS BATH
ENCLOSURE

ALUMAX
BATH ENCLOSURES

a product of ALCOA
PO Box 40 - Magnolia, AR 71754-0040 - (870) 234-4260
www.alumaxbath.com