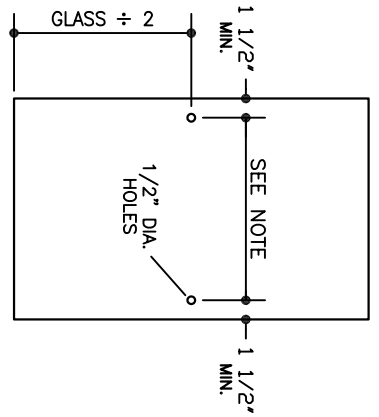
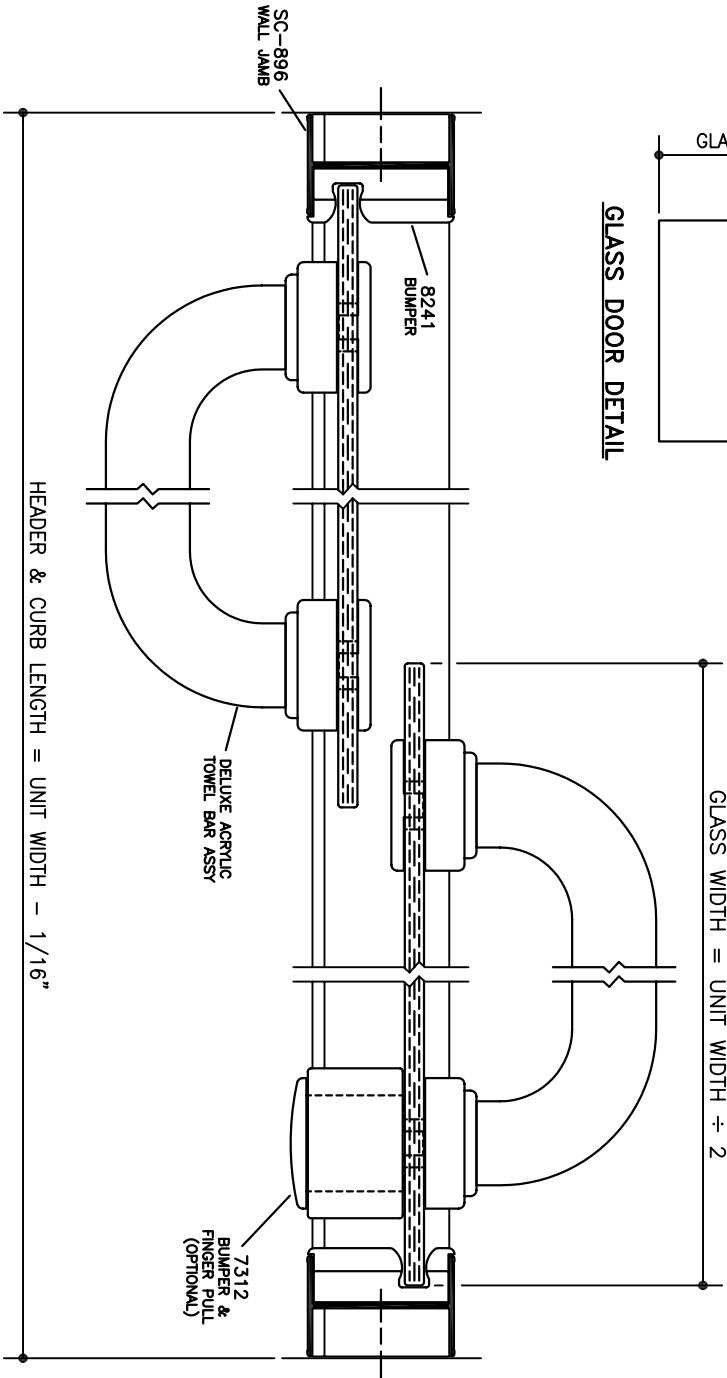


VERTICAL CROSS SECTIONS



GLASS DOOR DETAIL



HORIZONTAL CROSS SECTION

- NOTES:**
1. Clear acrylic towel bar assemblies are available in 18, 20, 22, 24, 26 and 28 inch sizes. All sizes are measured from center to center of mounting holes.
 2. The snap-off legs must be removed from the SC-632 anti-jump insert before using with the SC-614 Deluxe header.

1/2 SIZE DETAIL

NOTE: Glazing material for all KD units and Glazed units must conform to Ansi Z97.1 and CPSC Standard 16 CFC 1201 Category I and II.

EPH-N00-06170
DATE: 1-10-07

SERIES

340
DELUXE
FRAMELESS BATH
ENCLOSURE



ALUMAX
BATH ENCLOSURES

a product of ALCOA
PO Box 40 - Magnolia, AR 71754-0040 - (870) 234-4260
www.alumaxbath.com