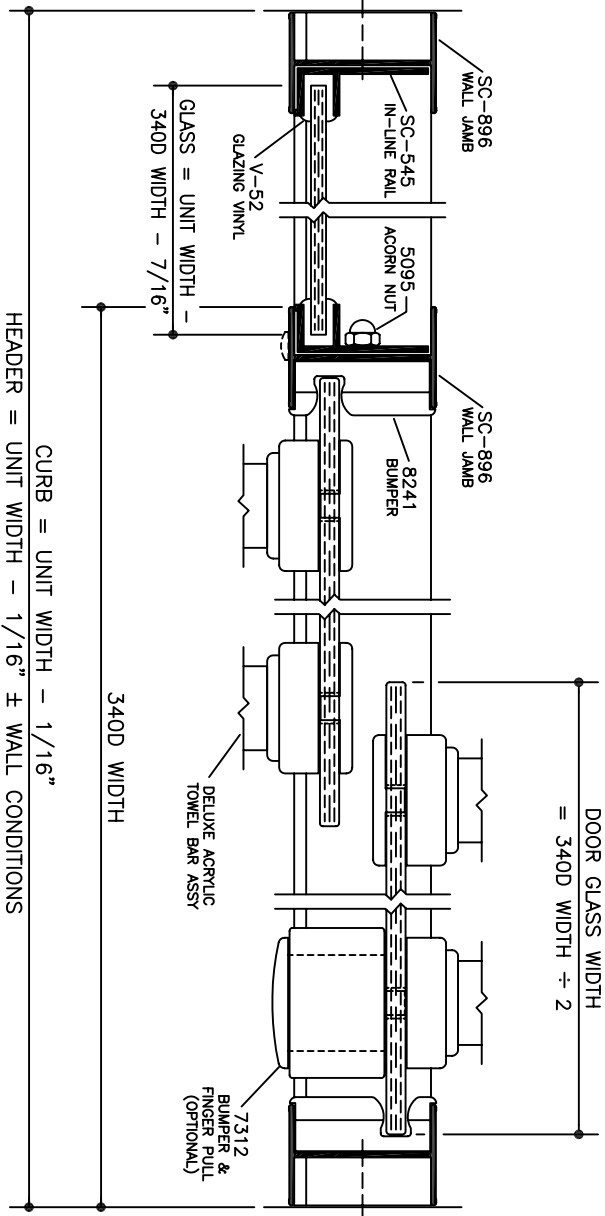


VERTICAL CROSS SECTIONS



HORIZONTAL CROSS SECTION

1/2 SIZE DETAIL

NOTE: Glazing material for all KD units and Glazed units must conform to Ansi Z97.1 and CPSC Standard 16 CFC 1201 Category I and II.

G03711214
DATE: 3-29-06

SERIES

341
DELUXE
FRAMELESS BATH
ENCLOSURE

CUSTOM UNIT ONLY
NOT A STOCK ITEM
DETAIL FOR REFERENCE USE ONLY

ALUMAX
BATH ENCLOSURES
a product of ALCOA
Po Box 40 - Magnolia, AR 71754-0040 - (870) 234-4260
www.alumaxbath.com