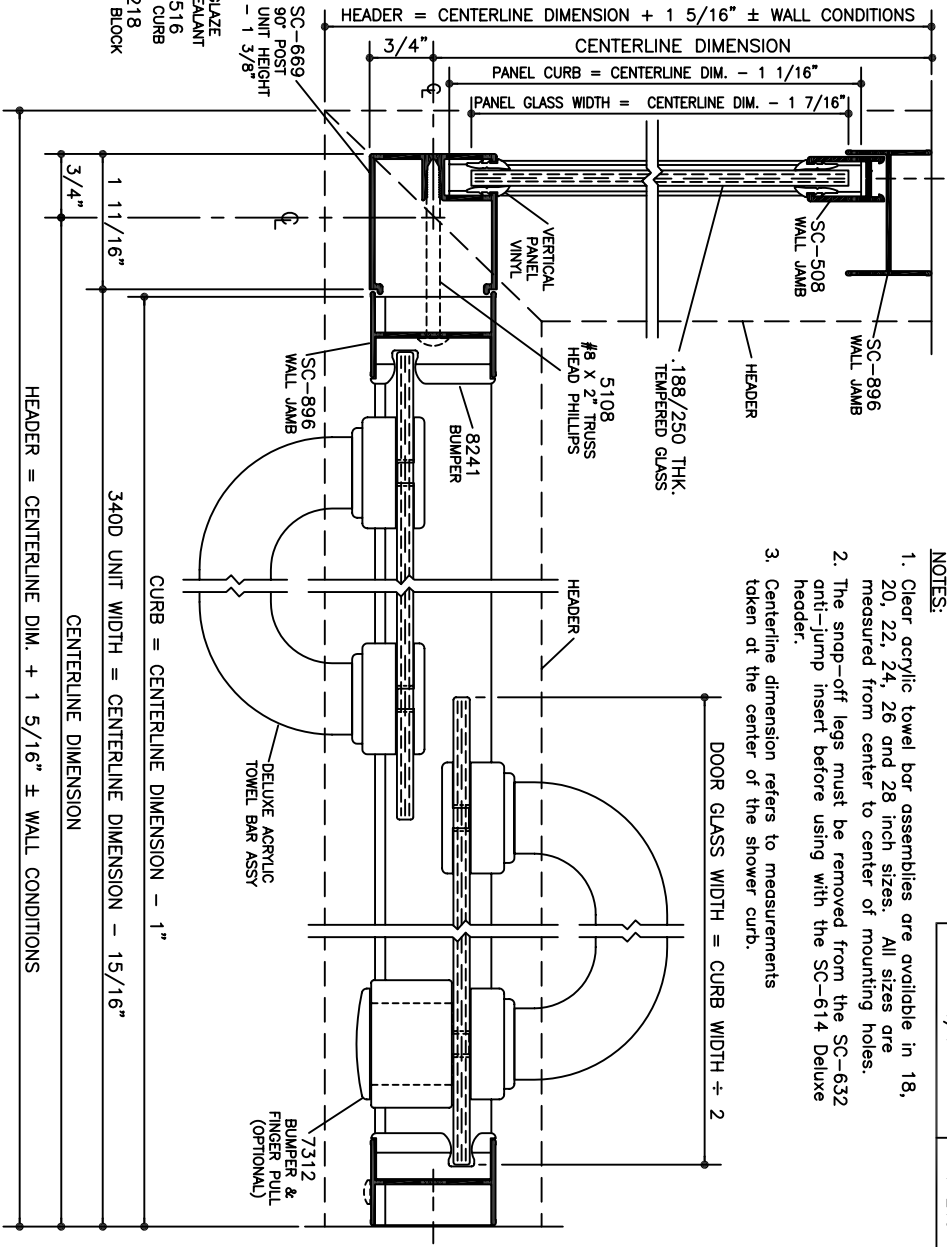


VERTICAL CROSS SECTIONS



HORIZONTAL CROSS SECTION

1/2 SIZE DETAIL

NOTE: Glazing material for all KD units and Glazed units must conform to Ansi Z97.1 and CPSC Standard 16 CFC 1201 Category I and II.

EPH-N00-06224  
DATE: 1-7-05

NOTES:

1. Clear acrylic towel bar assemblies are available in 18, 20, 22, 24, 26 and 28 inch sizes. All sizes are measured from center to center of mounting holes.
2. The snap-off legs must be removed from the SC-632 anti-jump insert before using with the SC-614 Deluxe header.
3. Centerline dimension refers to measurements taken at the center of the shower curb.

PANEL GLAZING VINYL	
GLASS THICKNESS	VERTICAL
3/16"	V-226
1/4"	V-219

**SERIES**  
**342DM**  
**DELUXE**  
MITERED HEADER  
FRAMELESS BATH  
ENCLOSURE

**ALUMAX**  
BATH ENCLOSURES  
a product of ALCOA  
PO Box 40 - Magnolia, AR 71754-0040 - (870) 234-4260  
www.alumaxbath.com