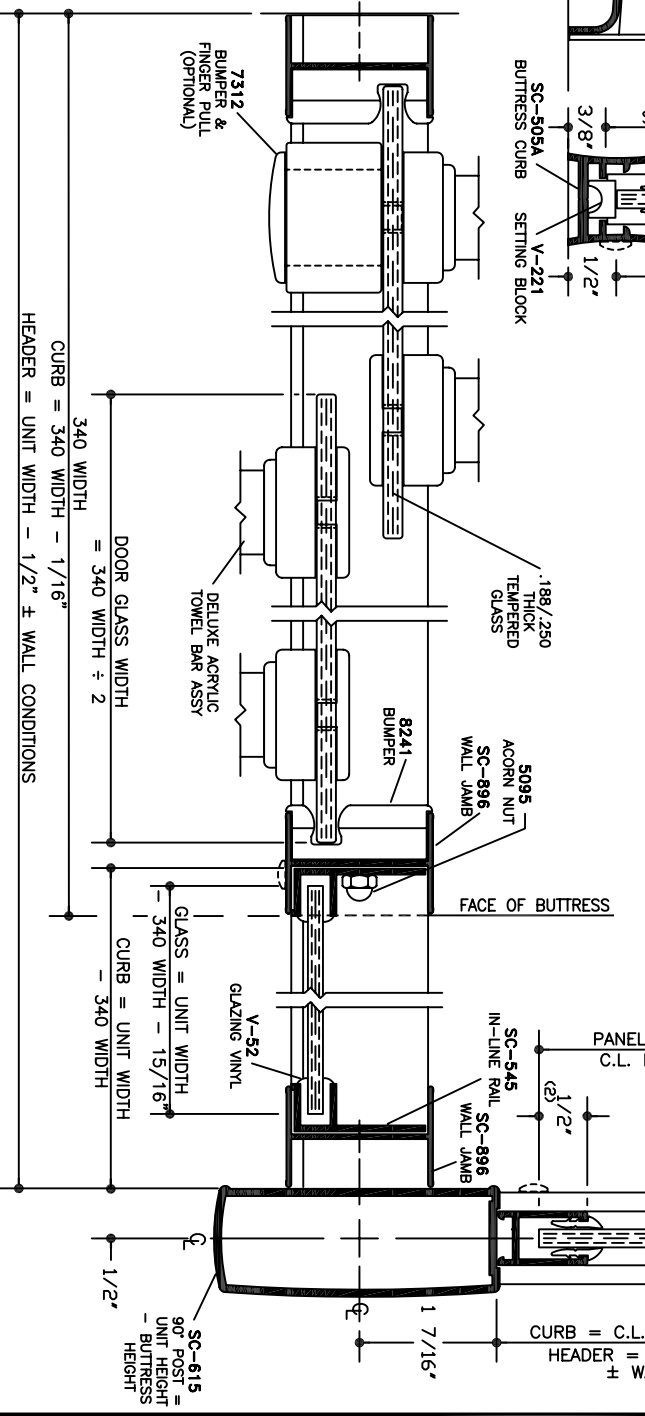


**BUTTRESS CROSS SECTIONS**

- NOTES:
1. Return panel 1/2" glass bite may vary up to +3/16" / -1/4" as necessary to facilitate the use of standard glass sizes or to configure for out-of-plumb or out-of-square conditions.
  2. Fractional dimensions rounded to the nearest 1/16". Actual unit sizes may vary up to 1/8" due to rounding or use of standard glass sizes.
  3. Center line dimension refers to measurements taken at the center of the bath curb.



1/2 SIZE DETAIL

NOTE: Glazing material for all KD units and Glazed units must conform to Ansi Z97.1 and CPSC Standard 16 CFC 1201 Category I and II.

**HORIZONTAL CROSS SECTION**

X343DB.dwg  
DATE: 1-7-05

PANEL GLAZING VINYL	
GLASS THICKNESS	PANEL GLAZING VINYL
3/16"	V-226
1/4"	V-219
	V-220

**SERIES**  
**343DB**  
**DELUXE**  
**FRAMELESS BATH**  
**ENCLOSURE**

**DETAIL FOR REFERENCE USE ONLY**

CUSTOM UNIT ONLY  
NOT A STOCK ITEM

**ALUMAX**  
**BATH ENCLOSURES**

a product of ALCOA

PO Box 40 - Magnolia, AR 71754-0040 - (870) 234-4260  
www.alumaxbath.com